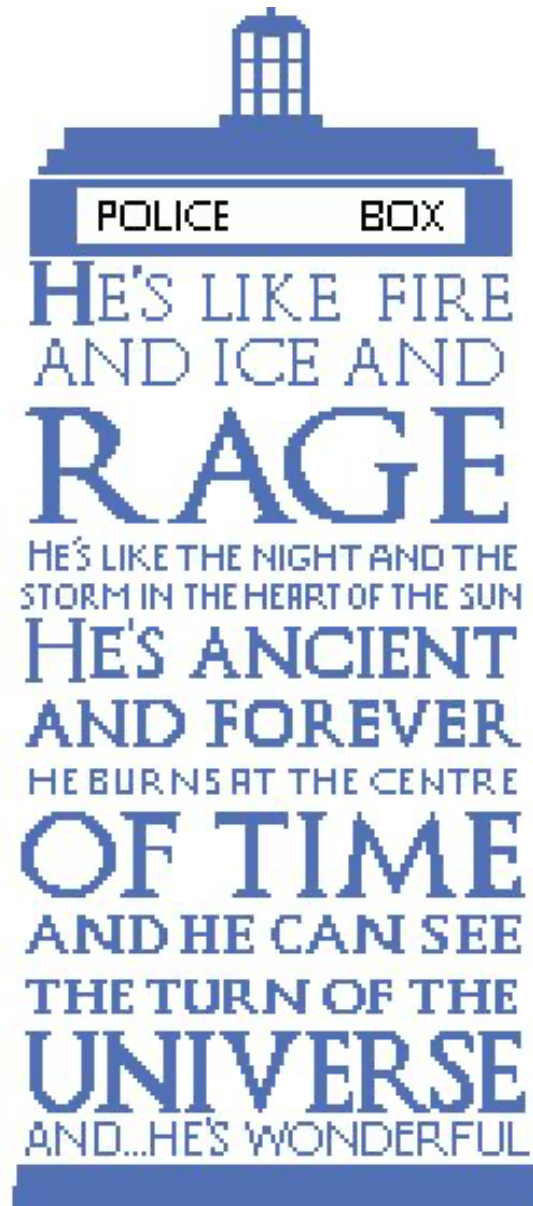


sjcmade



TARDIS

cross stitch pattern

©sjcmade 2021



And... he's
wonderful

Stitches: 142 x 284

Approximate dimensions in inches

14ct Aida: 10.2 x 20.2

16ct Aida: 8.9 x 17.8

18ct Aida: 7.6 x 15.8

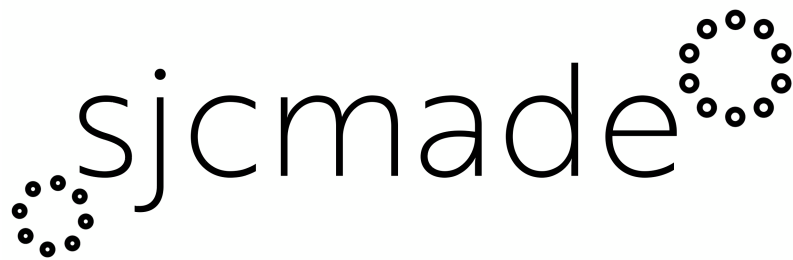
Approximate dimensions in centimetres

14ct Aida: 26 x 51.5

16ct Aida: 22.5 x 45

18ct Aida: 19 x 40

Remember to leave an appropriate border for framing purposes of at about 2 inches / 5 centimetres.



Thank you for purchasing a sjcmade cross stitch pattern!

Information about the pattern

All patterns are to be stitched with two stands of floss unless otherwise stated.

For beginners, if you Google 'beginner cross stitch' you'll find lots of great tutorials and YouTube videos for how to get started cross stitching.

Materials required

- Aida cloth large enough for the project. 14ct (= 14 squares per inch) is recommended for beginners.
- Floss in recommended colours – see colour chart for details
- Tapestry needle – a size 24 is recommended right for 14ct aida, a 26 for 16ct, and a 28 for 18ct.
- Embroidery frame/hoop if desired

Tips

- Start in the middle of your pattern so you can be sure you have enough space, and the design is centred in the middle of the cloth.
- It is good practice to have all of your top stitches going the same way. This creates a smooth finish to your piece.
- It can be easier to start with a block of colour near the middle of the fabric if the exact centre has lots of colour changes.
- You may like to use an embroidery hoop or frame to keep the tension of the material even. Embroidery hoops come in many sizes.
- Cut your embroidery thread into lengths of about 50 centimetres or so at a time as any longer may lead to more knots and tangles.
- Try and keep your tension on your stitches even, so they lay flat on the material.
- Don't make huge jumps across the back of the material when working with a single colour because it will show on the front. If you are moving more than a centimetre or two finish up the first area and start again in the new one.

Reading a pattern

Cross stitch patterns are grid charts of colours and symbols and each square on the grid corresponds to a single cross stitch.

Every combination of symbols and colours represents which colour floss to use. The colour chart will help you match these.

Around the edge of the pattern there are line numbers to help you keep track of where you are.

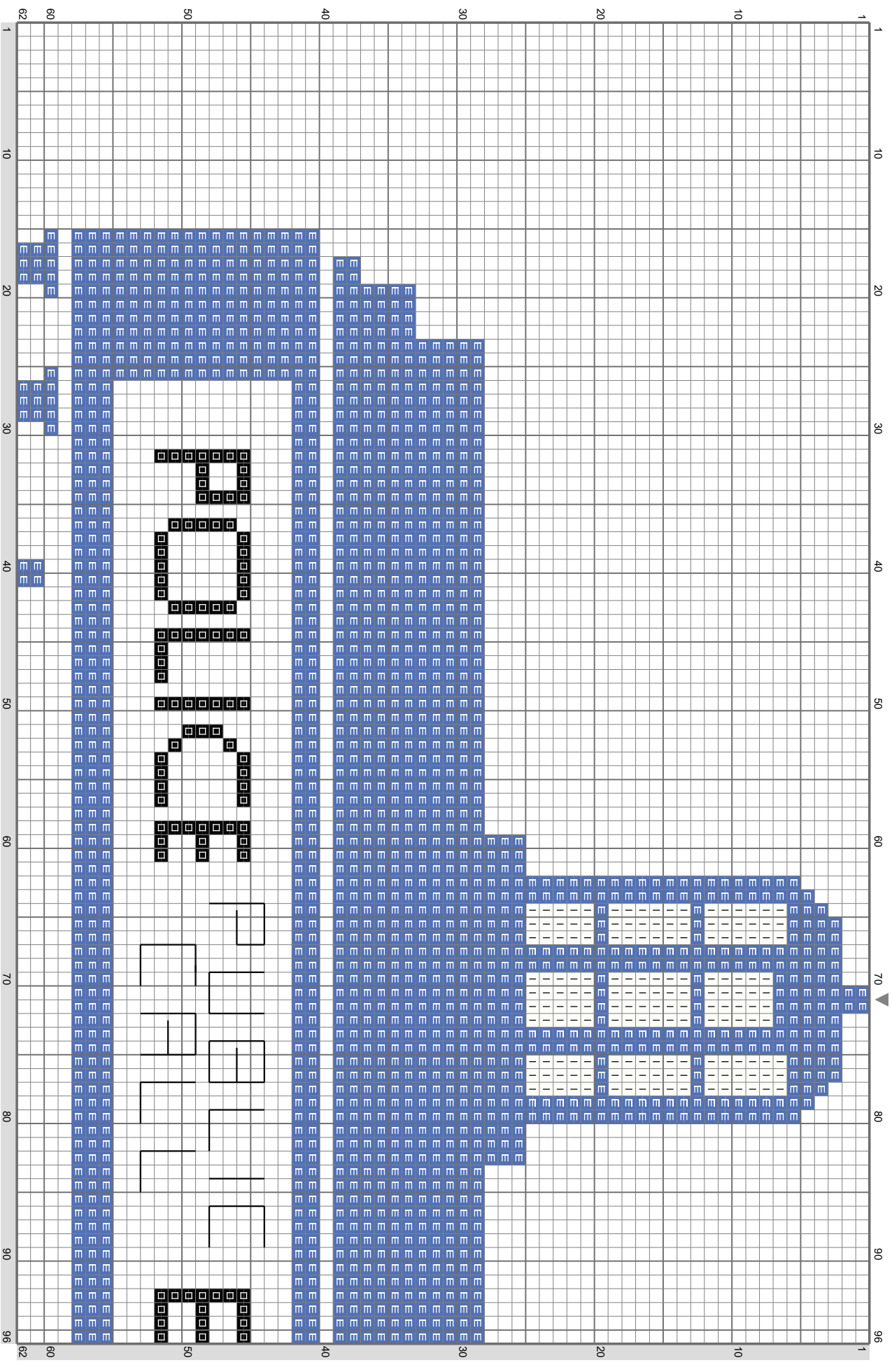
There are small arrows indicating the middle of the design.

If you would like to have a black and white/symbol-only pattern, please email sjcmade@gmail.com and I will email it to you within 24 hours.

Thank you so much, and happy stitching!

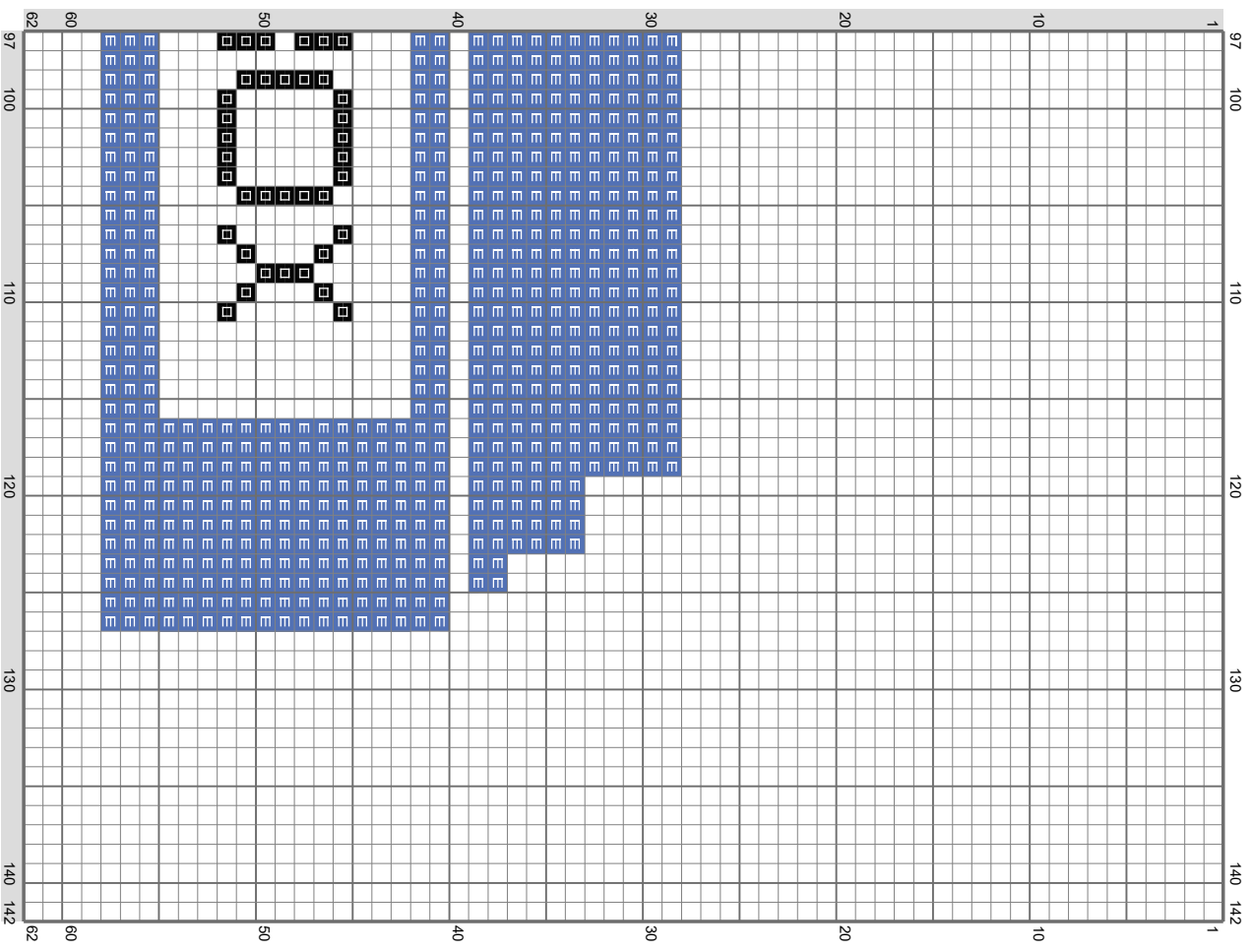
And...he's wonderful

Copyright (C) 2012 sjcmade



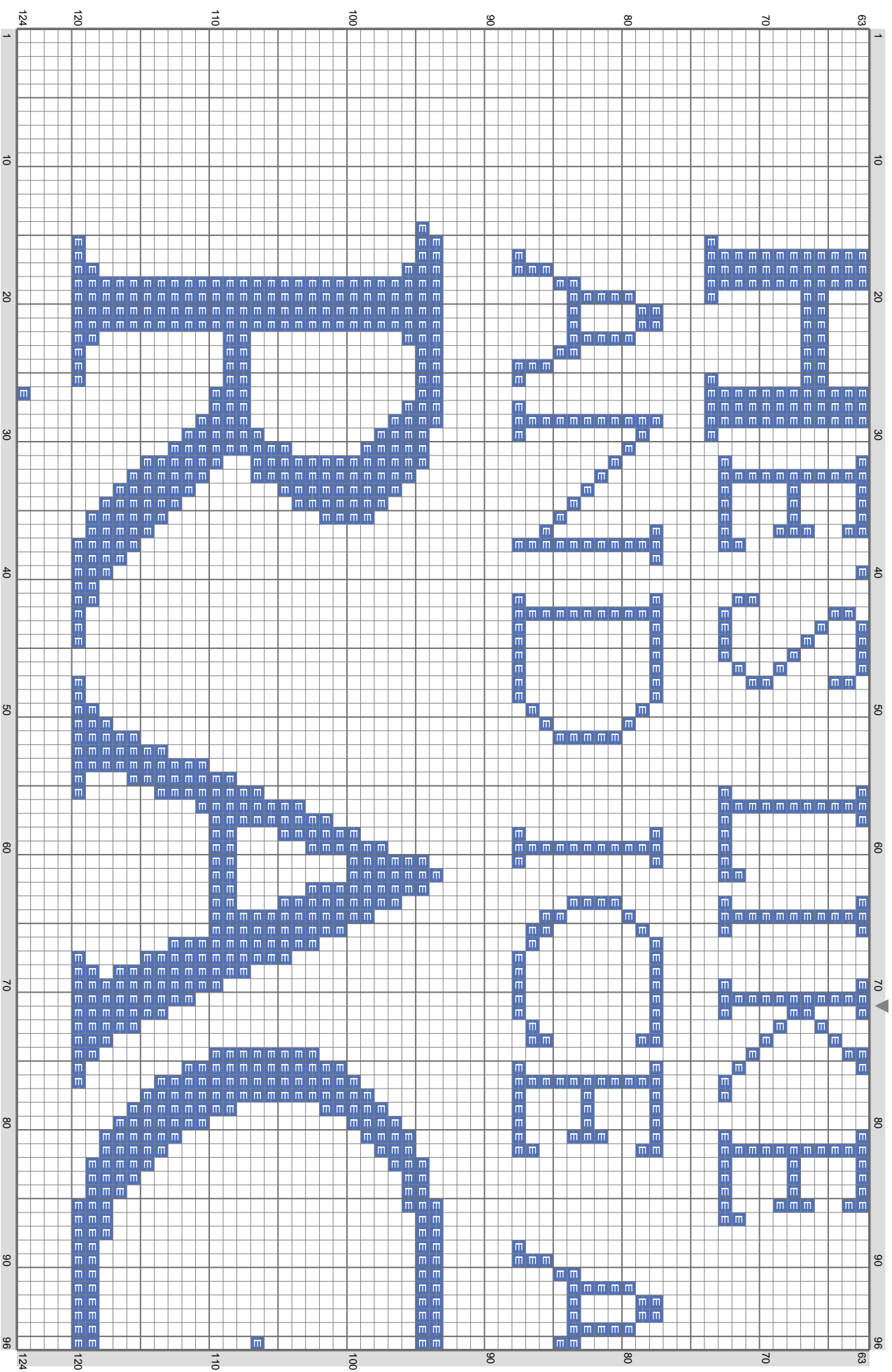
And...he's wonderful

Copyright (C) 2012 sjcmade



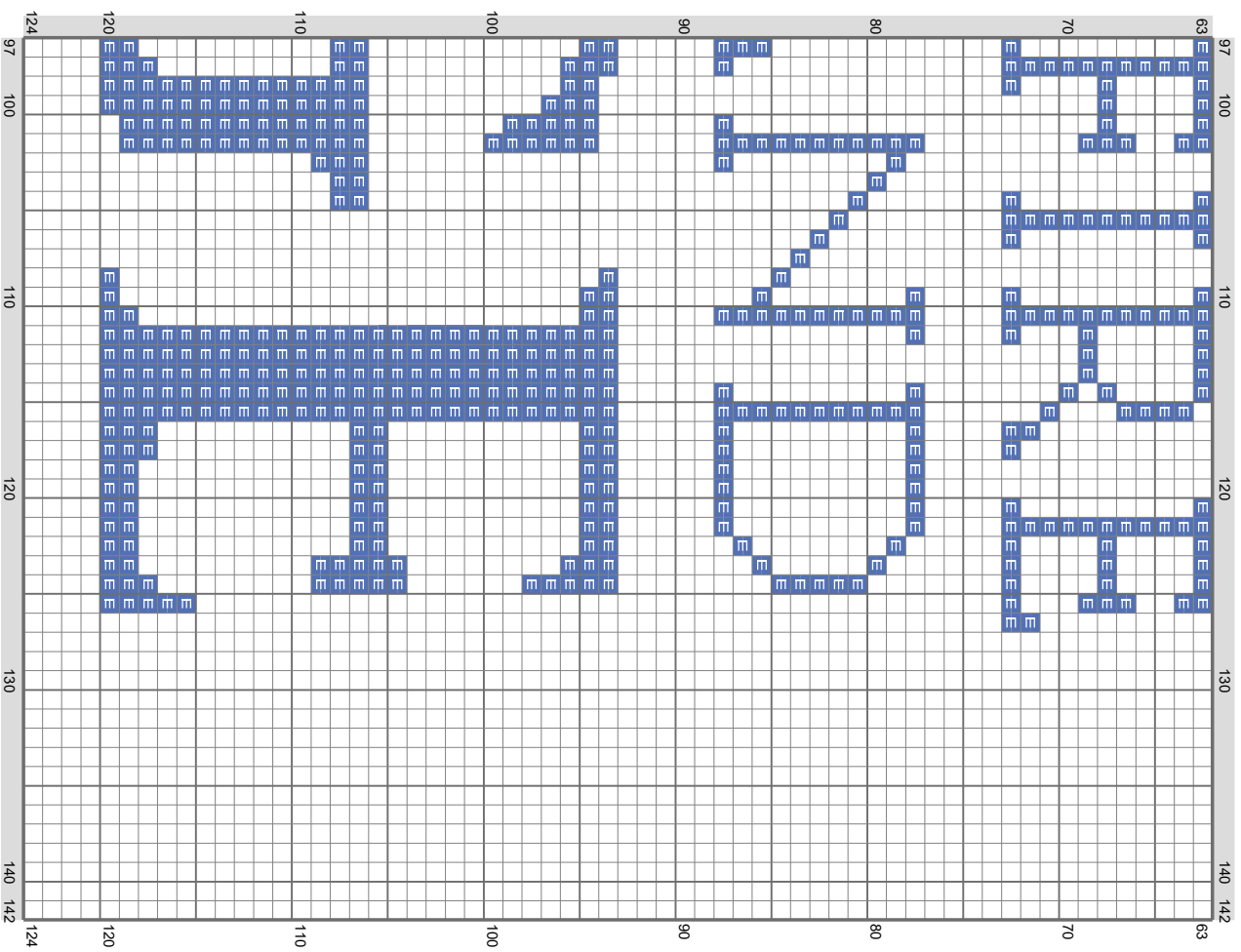
And...he's wonderful

Copyright (C) 2012 sjcmade



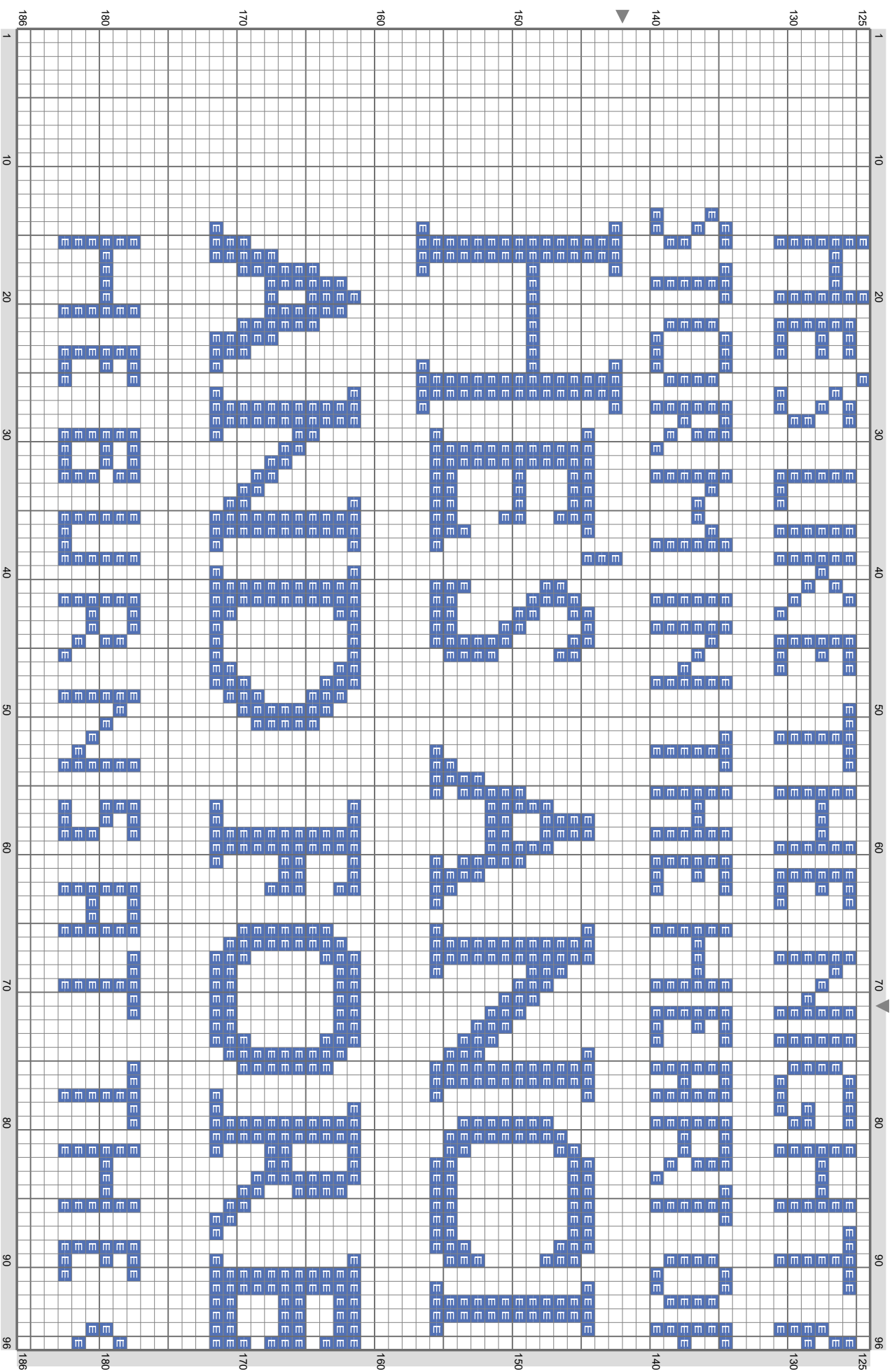
And...he's wonderful

Copyright (C) 2012 sjcmade



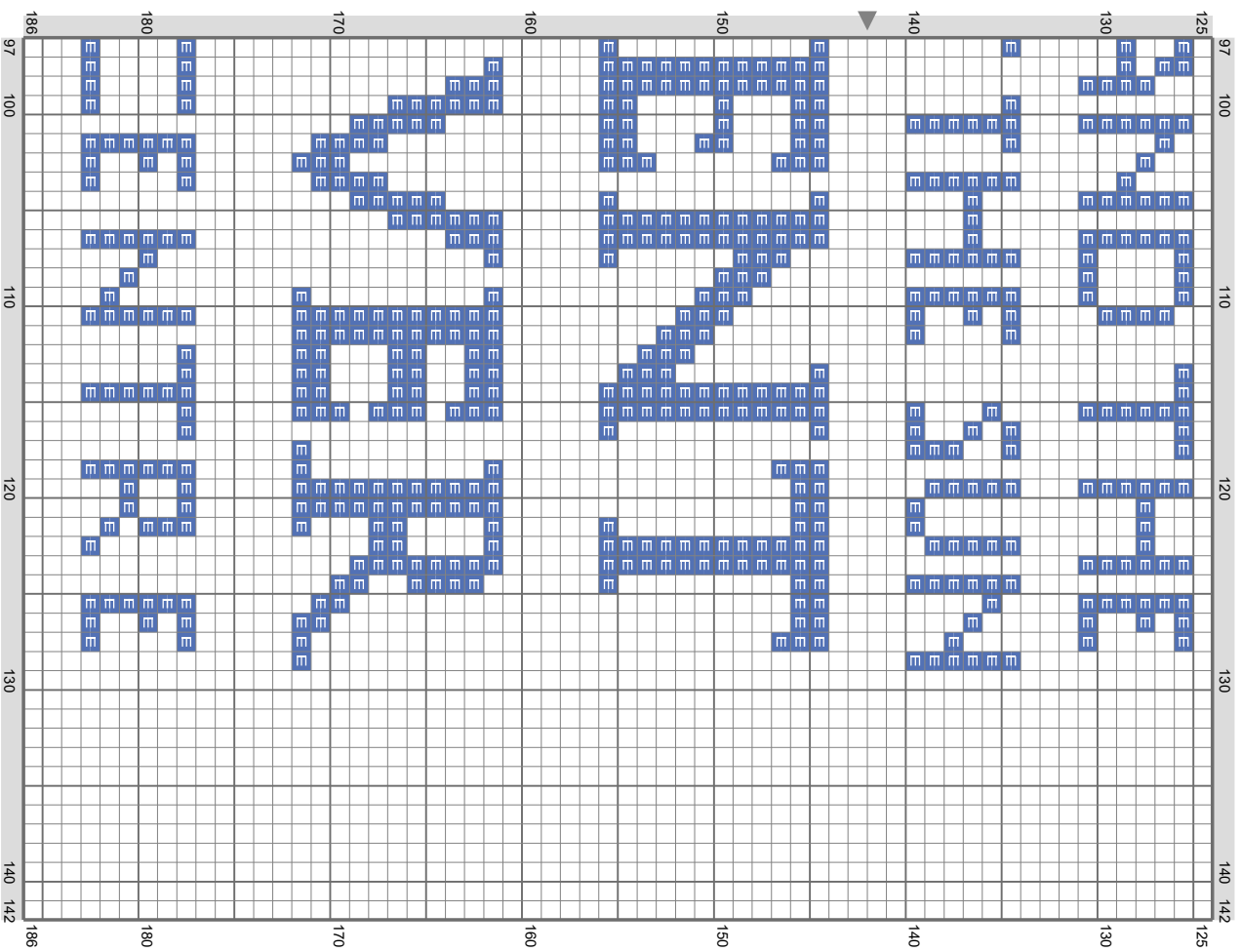
And...he's wonderful

Copyright (C) 2012 sicismade



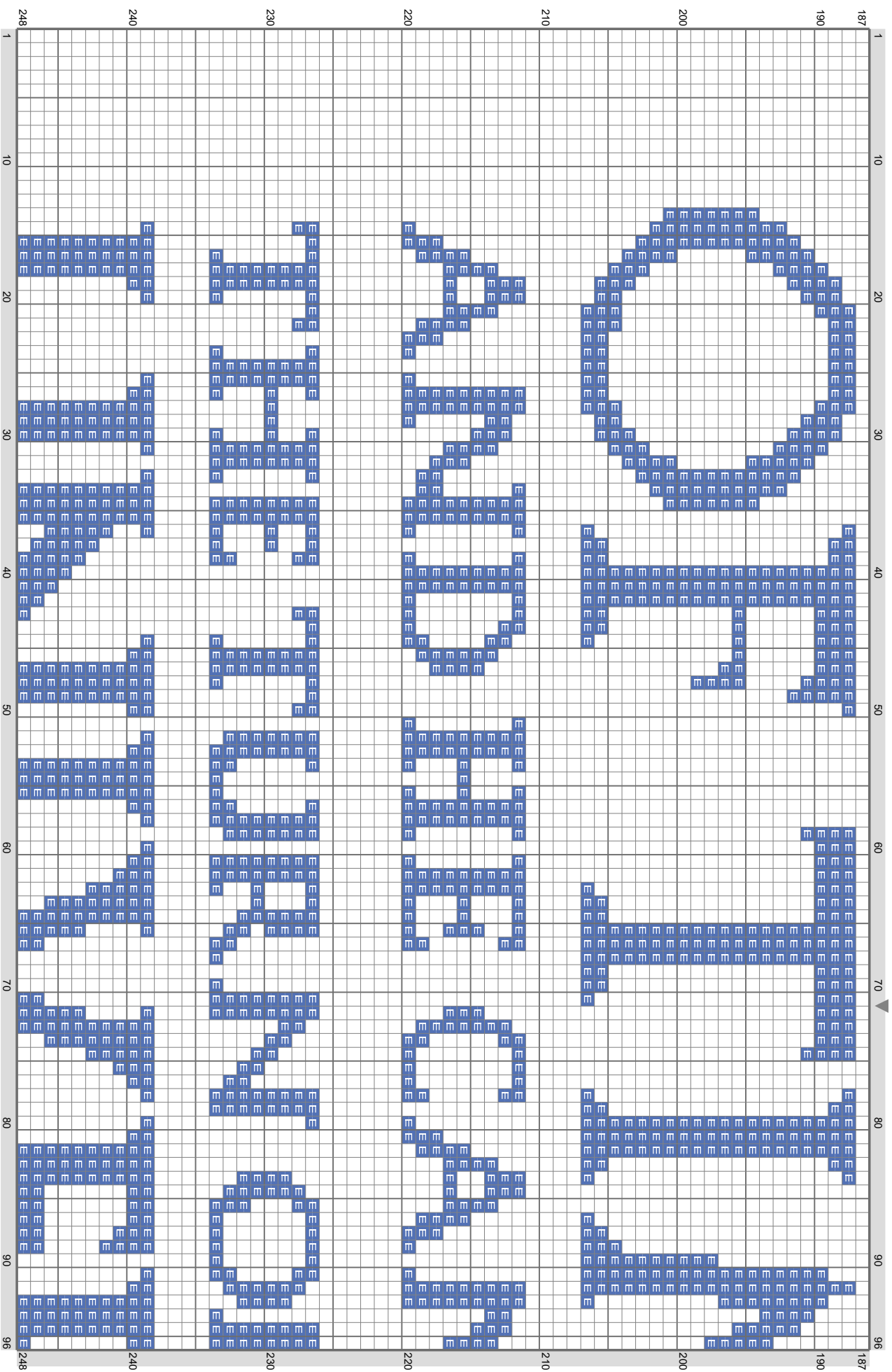
And...he's wonderful

Copyright (C) 2012 sjcmade



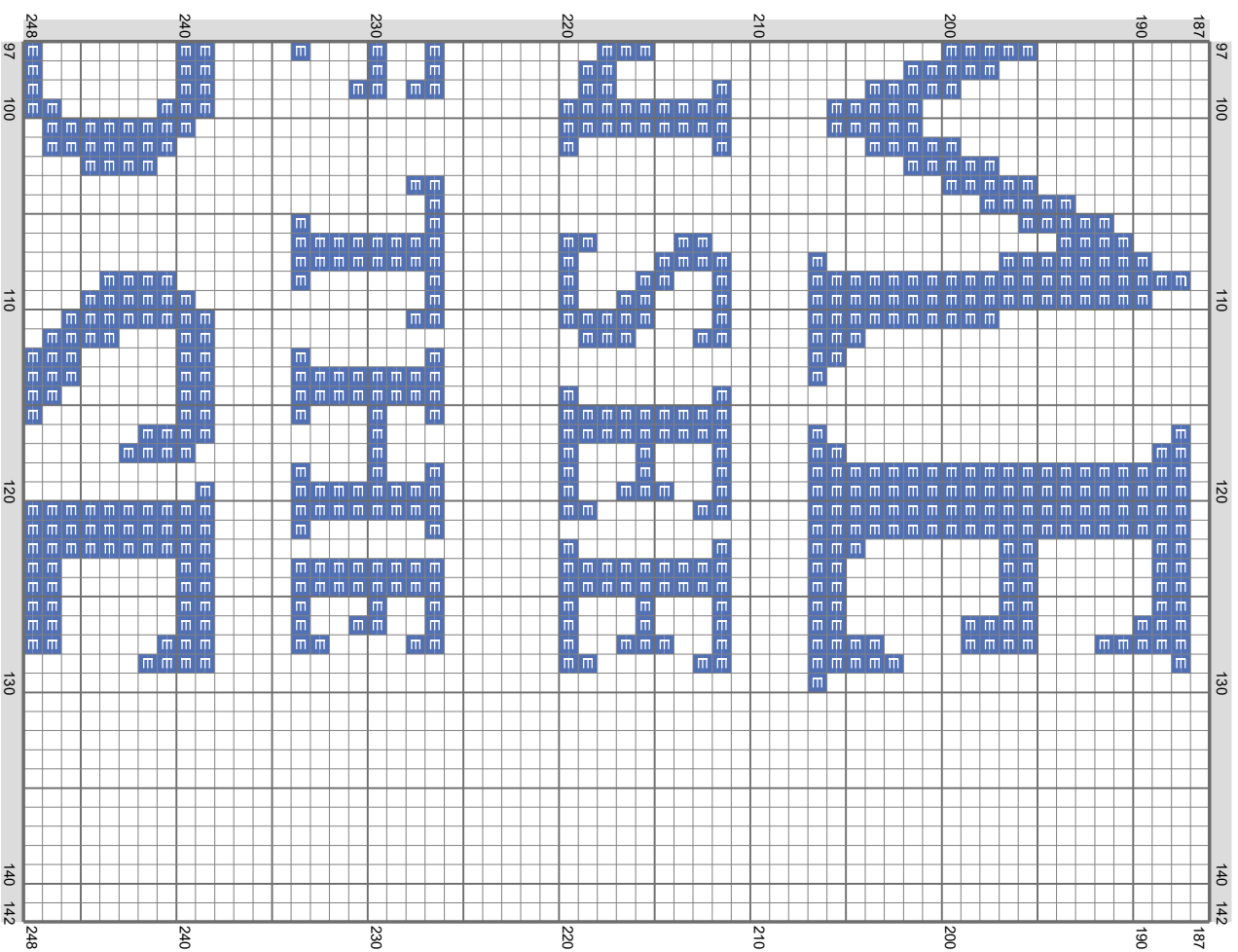
And...he's wonderful

Copyright (C) 2012 sjcmade



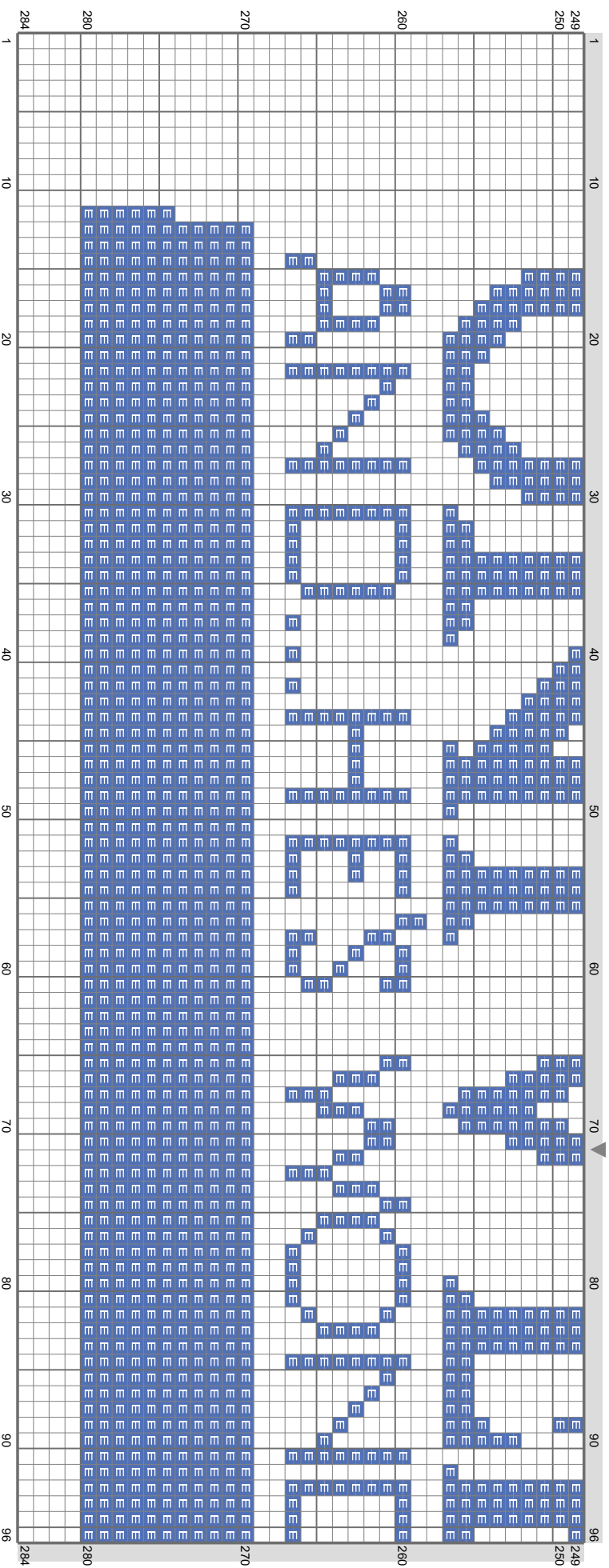
And...he's wonderful

Copyright (C) 2012 sjcmade



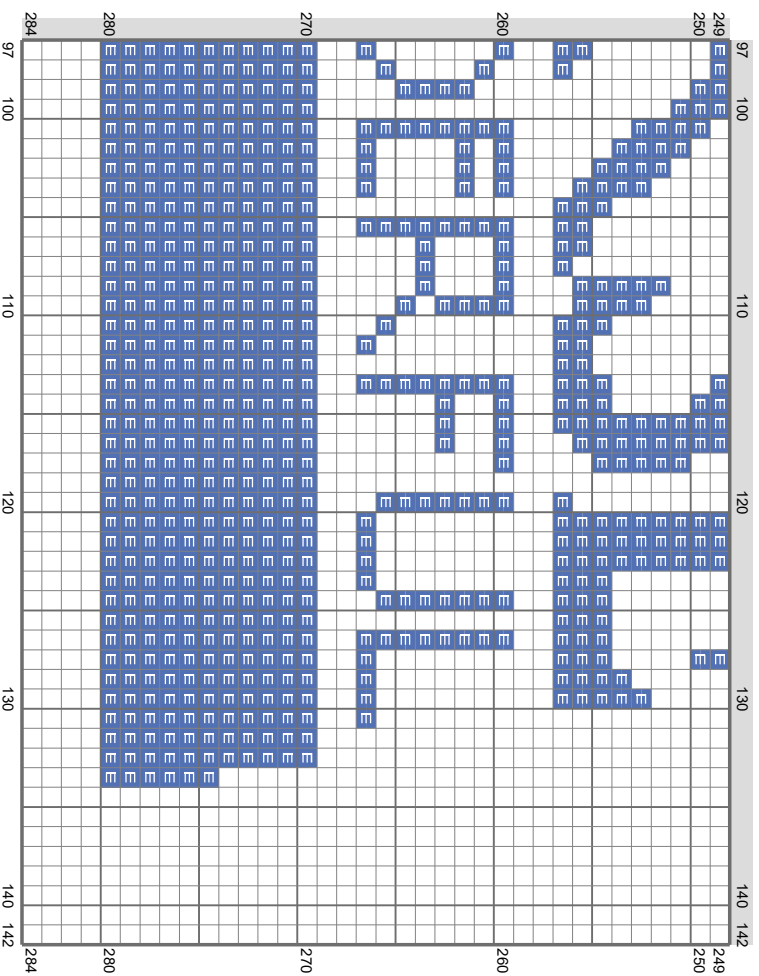
And...he's wonderful

Copyright (C) 2012 sjcmade



And...he's wonderful!

Copyright (C) 2012 sjcmade



Stitch Count: 142w x 284h

Finished Size: 45.08 cm x 90.17 cm (16 ct./inch)

Cloth: Aida

Cloth's Color: White

of colors: 3 Colors

Color Table (DMC)

Cross Stitch

■ 825 (9853 ct)

■ 310 (131 ct)

□ BLANC (166 ct)

Backstitch

└ 310 (30 ct)

And...he's wonderful

Copyright (C) 2012 sicismade

